




Role of Key Federal, State & Community Partners in Emergency Preparedness

Bruce L. Akey, MS, DVM
 State Veterinarian/ Director
 Division of Animal Industry
 New York State Department of Agriculture & Markets
Bruce.akey@agmkt.state.ny.us



Disaster Declarations

LOCAL - Mayor, County Administrator
 ↓
 STATE - Governor
 ↓
 FEDERAL - Secretary Ag/President



Roles & Responsibilities

Individuals

Local Government

State Government

Federal Government



Individuals

- Animal ownership = animal care
- Human safety
- Animal safety
- Biosecurity**
- Property damage
- Contingency planning
 - Escape routes
 - Equipment/procedures for relocating animals



Local Government

- First responders
- Focus for integration of emergency management plans
- Local law enforcement authority
- Mutual Assistance Agreements



State Government

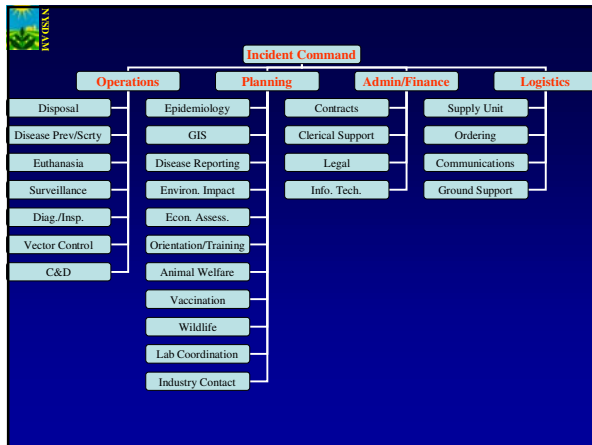
- State coordinates response for multiple areas
- Provides resources to augment local resources
- Law Enforcement - quarantines, Interstates
- State Veterinarian
- State Department of Agriculture - Commissioner
- State Emergency Management Office
- Governor

Federal Government

- Resources (money, personnel, equipment)
- Law Enforcement - Bioterrorism = FBI
- USDA
- FEMA
 - DHHS - CDC
 - DOD
 - EPA

Command and Control

- The standard for command and control of emergency response is the **Incident Command System (ICS)**. ICS was first developed by the US Forest Service of the USDA for fighting wild fires. Adopted by FEMA and all state-level emergency management offices.



New York State County Animal Response Teams - NYSCART

CART - Each County Animal Response Team will serve as a specialized resource to assist local official emergency management personnel as needed in all phases (mitigation, preparedness, response and recovery) of an emergency or disaster that impacts animals in their region of responsibility. Members of a CART are by definition volunteers and are not considered local government employees although a CART can and should include some local government employees.

NYSCART

1. An Animal Emergency Response Plan or Annex must be completed, based on the template provided by the DAI CART Coordinator. Each CART must designate a Primary Contact person to be the point of contact for County and local government. Address, telephone and cell phone information for the Primary Contact must be included in the Animal Emergency Response Plan or Annex, along with a roster of the CART members. The completed plan must be submitted to the CART Coordinator for review and approval.

NYSCART

2. Each member of the **CART** must read and sign the **CART Code of Conduct**.
3. Each member of the **CART** must attest to having read the following course materials. Materials for the course are available on the web at: <http://training.fema.gov/EMIWeb/IS/crslist.asp> or from the **CART** Coordinator
 - FEMA IS-195 Basic Incident Command System Course
 - FEMA IS-111 Livestock in Disasters
 - FEMA IS-010 Animals in Disaster Module A
 - FEMA IS-011 Animals in Disaster Module B



NYSCART

4. Each **CART** should participate in all applicable county or city level table-top emergency response exercises.
5. Each **CART** must have at least one member that is a veterinarian licensed to practice in New York and the appropriate Emergency Management official from the local jurisdiction.



NYSCART

In addition, it is highly recommended that representatives from the following groups be included:

- Local Health Department
- County Extension Agent**
- Dog Control Officer
- Local ASPCA or Humane Society
- Local agricultural co-op and/or commodity associations (dairy, beef, swine, equine etc..)
- New York State Department of Environmental Conservation
- USDA Farm Services Agency
- Feed stores and Farm Supply stores
- Local Law Enforcement



NYSCART

6. Each **CART** should specify responsibilities for its members and develop and maintain a phone tree and emergency communications plan. Sub-teams, based on the expertise, experience, and numbers of people available, can be developed to respond to various emergency situations.
7. The **CART** should keep up-to-date lists of local vendors or sources that can provide materials and services in the event of an emergency. Lists might include:
 - Boarding kennels or other temporary pet shelter locations
 - Veterinary hospitals
 - Potential livestock shelters - farms, fairgrounds, zoos etc...
 - Supply sources - fencing, gates, feeders, heaters, generators
 - Feed sources